

# McBride Crossing

Cambridge, MD







## Welcome to McBride Crossing!

This new 18 unit development by Crown Homes is tucked away on a private cul de sac a stone's throw away from the heart of historic Cambridge. Each unit has a primary suite on the main floor, as well as three bedrooms and a full bath on the second floor. At almost 1,500 finished square feet, this is the perfect starter home or downsize option. Each property has a private parking pad with a large backyard, and there is still time to customize the home to your liking and a generous allowance for customizations when working with the builder's lender and title company. Schedule a call with our representative today



# Site Map



# Standard Specifications



## Interior Features

- 4 Bedrooms | 1,485 SQFT
- 2 Full Baths / 1 Half Bath
- Solid Oak Railing
- Decorator Lighting Features
- Cable TV and Phone Pre-Wire Locations
- Large Open Country Kitchen with Granite Tops
- Wall to Wall Carpeting in Bedrooms
- LVP in Kitchen, Dining Room, Living Room and Foyer
- Ceramic Shower Walls in Baths
- Deluxe Expansive Glass Mirrors and Vanity
- Large Master Bedroom Closets
- Custom Quality Kitchen Cabinetry and Bath Vanities
- Granite Kitchen Countertops with Overhang
- Separate Kitchen Pantry with Vented Shelving
- Stainless Steel Sink with Disposal
- Complete Stainless Steel Appliance Package includes:
  - Stainless Steel 20 CF Accuchill Refrigerator
  - Stainless Steel 5 Cycle Dishwasher
  - Stainless Steel F/5 LP Gas Range
  - Stainless Steel Microwave / Hood Vent
- Large Laundry Room
- Electrical and Water Connections for Washer
- Electrical Hook-Up and Vent for Dryer
- TWP Panel Interior Doors
- Semi-Gloss Paint on Trim and Interior Doors
- CPVC Plumbing and Supply Lines

## Warranties

- 10 Year Homeowner's Warranty
- Manufacturer's Limited Warranties
- 5 Year Termite Control Warranty
- Pre-Settlement Orientation
- Six Month Warranty Inspection

## Exterior Features

- Expansive Lot
- Stone Accents on Front Elevation  
\*\*as option
- Covered Full Front Porch with Decorative Columns \*\*as option
- Front and Rear Electrical Outlets and Hose Bibs
- Aluminum Gutters and Downspouts
- Low Maintenance Vinyl Siding
- Concrete Driveway
- Concrete Lead Walks
- Underground Utilities
- Painted Foundation
- Board and Battan \*\* as options
- Decorative Trim Features
- Doorbell
- Mailbox
- Professionally Landscaped
- Fiberglass Shingle Roof (25 Year)
- Public Water and Sewer

## Energy Saving Features (\*\*Energy Star)

- R-49 Insulated Ceilings\*\*
- R-21 Insulated Exterior Walls\*\*
- R-19 Fully Insulated Basement Walls\*\*
- R-30 Insulations on Cantilevers\*\*
- Insulated Vinyl Siding Glass Doors with Screen
- Hot Water Heater
- Raised Panel Steel Insulated Entry Door
- 1 Zone LP Gas Furnace / Electric Air Conditioner
- Attic Ridge and Soffit Ventilation System

# McBride Crossing

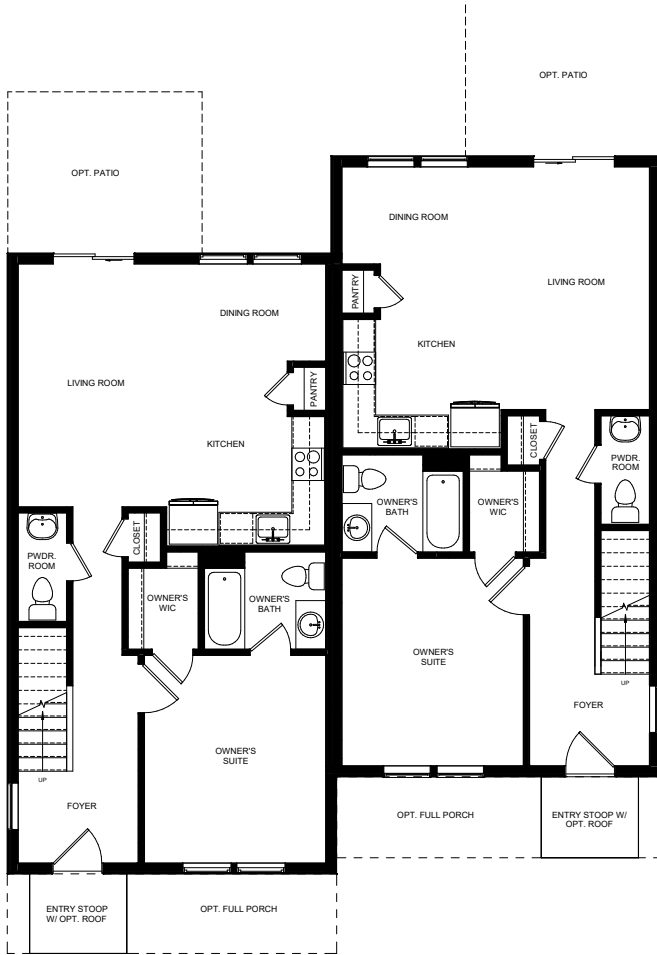


- 4 Bedroom, 2.5 Bathroom
- Approximately 1,485 Square Feet
- Located off of Maces Lane in Cambridge, MD
- First Floor Owner's Suite
- Multiple Elevation Options

ELEVATION A (BASE MODEL)



CONCEPTUAL RENDERING



FIRST FLOOR



SECOND FLOOR



ELEVATION B



ELEVATION C







## A Family of Builders, Building for Families

Crown Homes has been building homes in Maryland since 1983. With over 30 years of experience, Crown Homes LLC has built hundreds of homes varying in style, in majority of the counties in Maryland. With currently three generations of builders, Crown Homes, LLC continues to strive to make dreams come true for families across Maryland.

